

# TUNGSTEN-CARBIDE CUTTERS

Expressly conceived to cope with any issue or specific need arising during the undercutting operation, the wide range of Rimac cutters presents some **unique distinguishing features: resistance, durability and high-precision performance.**

**The development of all models derives from a close and useful collaboration with Rimac customers:** in effect, it is exactly in close contact with the final users that Rimac decided to develop and refine its cutters, always putting the specific needs of the professionals working on undercutting first.

Thanks to its know-how and to the experience acquired in the field, **Rimac can offer also special cutters, with specific and completely customized technical features** shaped on the customer needs.

## FOR UNDERCUTTING



# Our models

## CUTTERS - N MODEL

N-10, N-12, N-15

## CUTTERS - V MODEL

V-12, V-15, V-21

## CUTTERS - T MODEL

T-15, T-21, T-25

## CUTTERS - C MODEL

C-10, C-15, C-21, C-25

## CUTTERS - CL MODEL

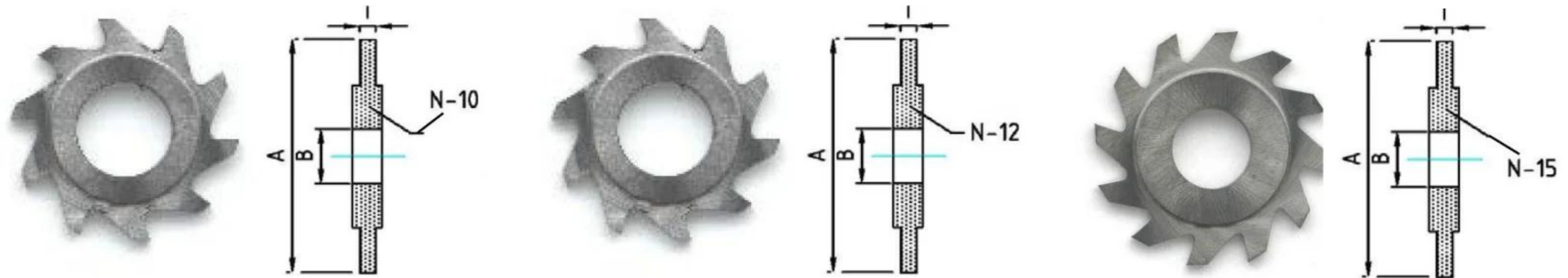
CL-8.5, CL-13.5, CL-19, CL-23

## CUTTERS - CR MODEL

CR-8.5, CR-13.5, CR-19, CR-23



# CUTTERS - N MODEL



## CUTTER MODEL N-10

The tungsten carbide cutters model N-10 present the following technical features:

$\varnothing$  A 10 mm;  
 $\varnothing$  B 3 mm;

Thickness: from 0.3 up to 1.0 mm

No. Teeth: 8

## CUTTER MODEL N-12

The tungsten carbide cutters model N-12 present the following technical features:

$\varnothing$  A 12 mm;  
 $\varnothing$  B 5 mm;

Thickness: from 0.4 up to 1.0 mm

No. Teeth: 10

## CUTTER MODEL N-15

The tungsten carbide cutters model N-15 present the following technical features:

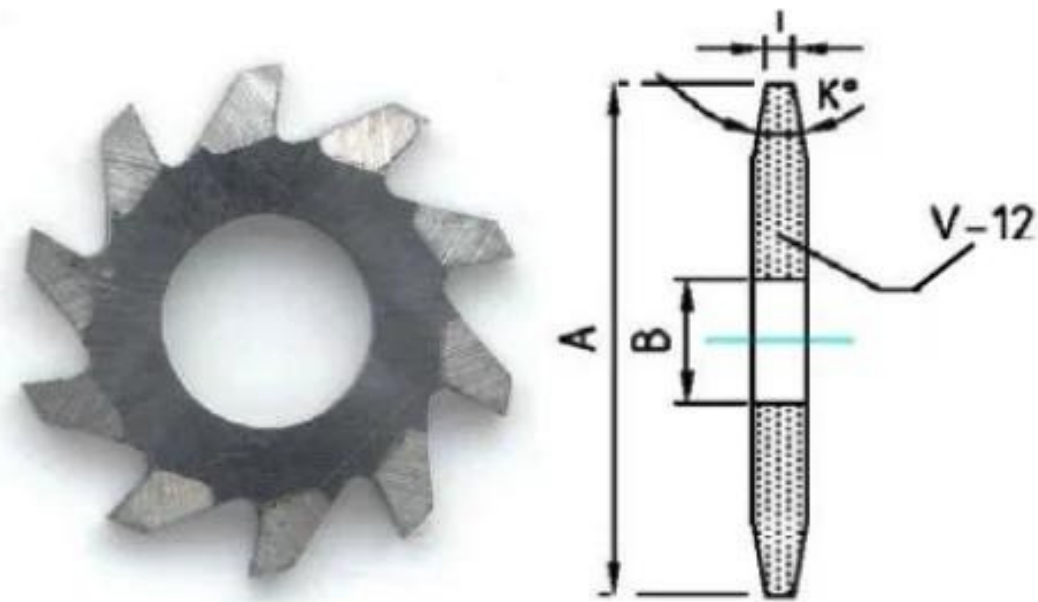
$\varnothing$  A 15 mm;  
 $\varnothing$  B 5 mm;

Thickness: from 0.4 up to 1.0 mm

No. Teeth: 12



# CUTTERS - V MODEL



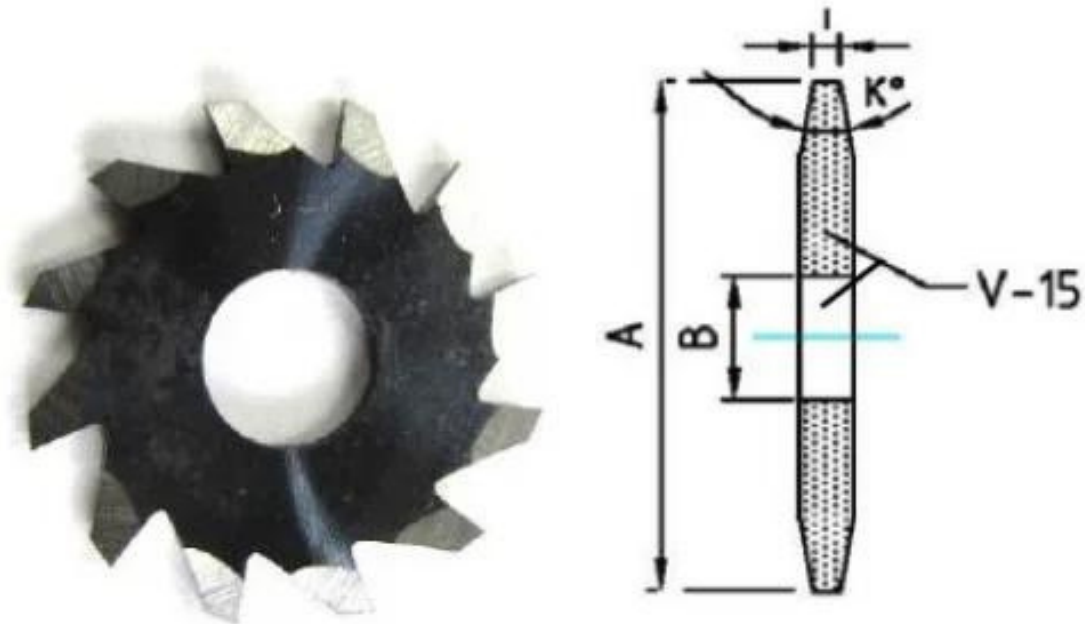
## CUTTER MODEL V-12

The tungsten carbide cutters model V-12 present the following technical features:

Ø A 12 mm;  
Ø B 5 mm;

Thickness: from 0.4 up to 1.0 mm

Angle: 20°  
No. Teeth: 10



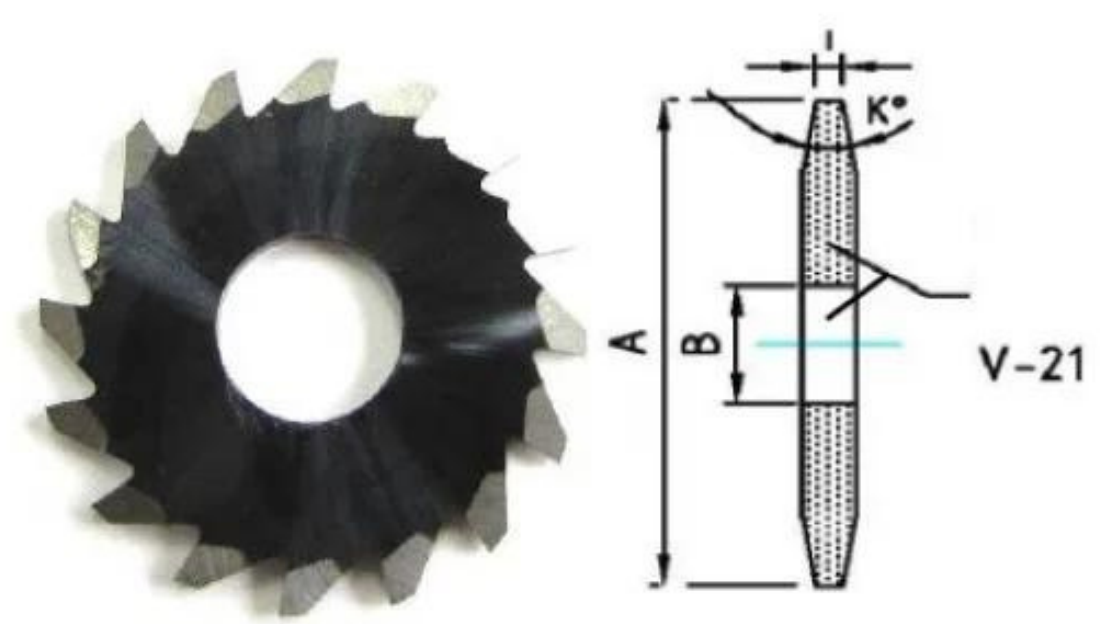
## CUTTER MODEL V-15

The tungsten carbide cutters model V-15 present the following technical features:

Ø A 15 mm;  
Ø B 5 mm;

Thickness: from 0.4 up to 1.5 mm

Angle: 20°  
No. Teeth: 12



## CUTTER MODEL V-21

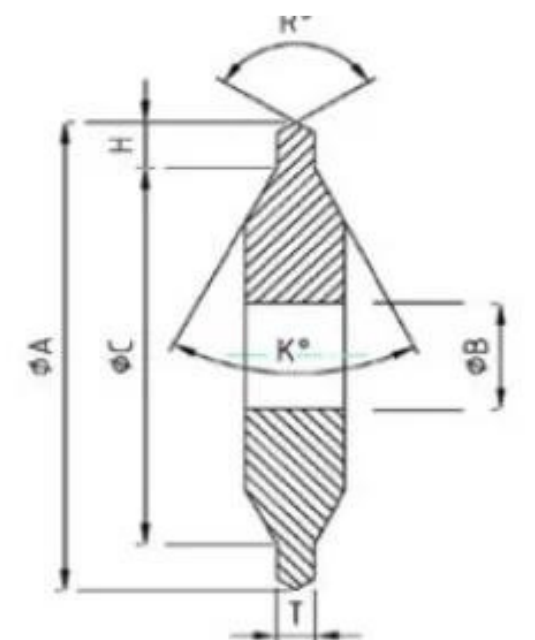
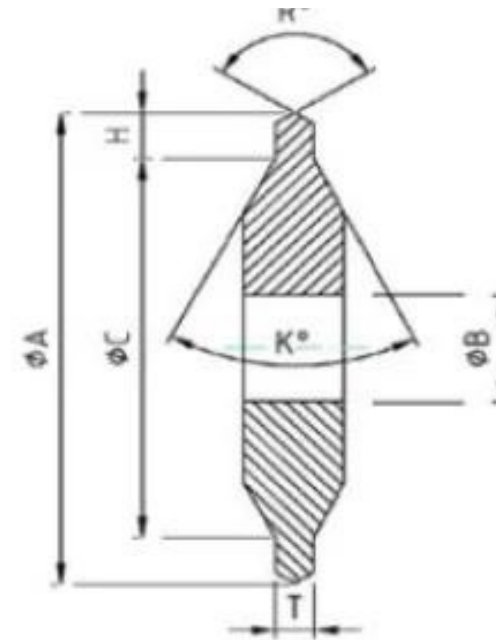
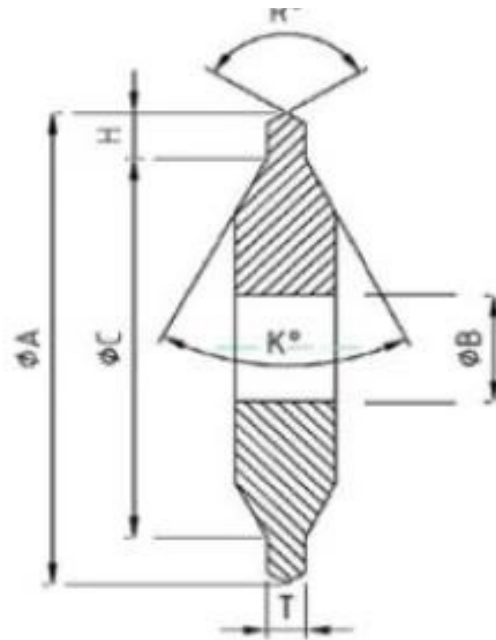
The tungsten carbide cutters model V-21 present the following technical features:

Ø A 21 mm;  
Ø B 7 mm;

Thickness: from 0.4 up to 1.8 mm

Angle: 20°  
No. Teeth: 16

# CUTTERS – T MODEL



## CUTTER MODEL T-15

The tungsten carbide cutters model T-15 present the following technical features:

$\phi A$  15 mm;  
 $\phi B$  5 mm;  
 $\phi C$  13/13.5 mm;

Thickness: from 0.6 up to 1.3 mm

Angle:  $90^\circ$   
No. Teeth: 8

## CUTTER MODEL T-21

The tungsten carbide cutters model T-21 present the following technical features:

$\phi A$  21 mm;  
 $\phi B$  7 mm;  
 $\phi C$  18/18.5 mm / 19/19.5 mm;

Thickness: from 0.6 up to 1.7 mm

Angle:  $60^\circ / 90^\circ$   
No. Teeth: 8

## CUTTER MODEL T-25

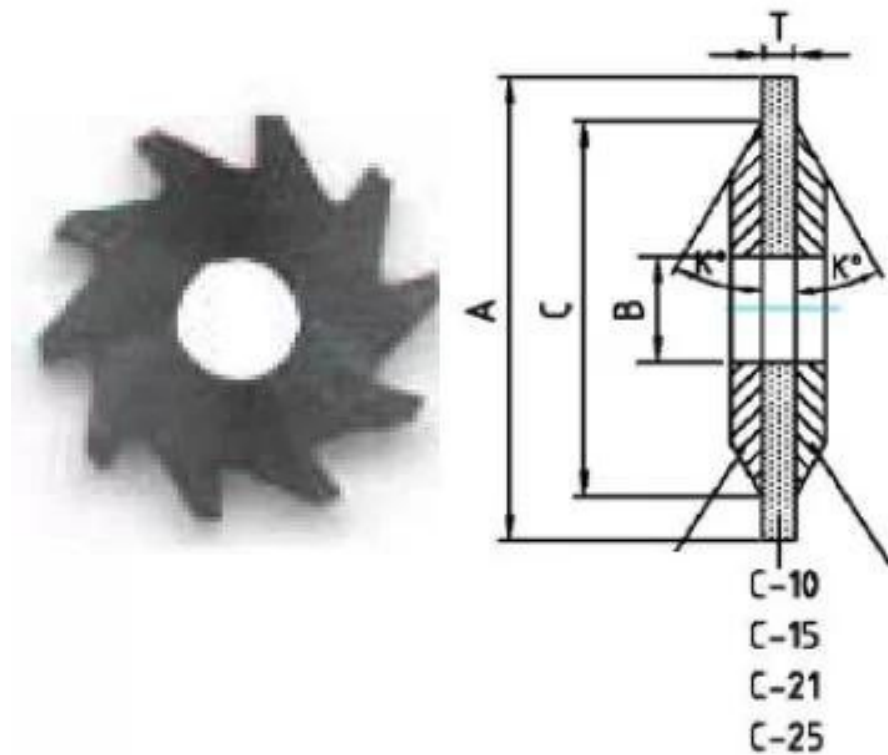
The tungsten carbide cutters model T-25 present the following technical features:

$\phi A$  25 mm;  
 $\phi B$  7 mm;  
 $\phi C$  22/22.5 mm / 23/23.5 mm;

Thickness: from 0.7 up to 1.7 mm

Angle:  $60^\circ / 90^\circ$   
No. Teeth: 10

# CUTTERS – C MODEL



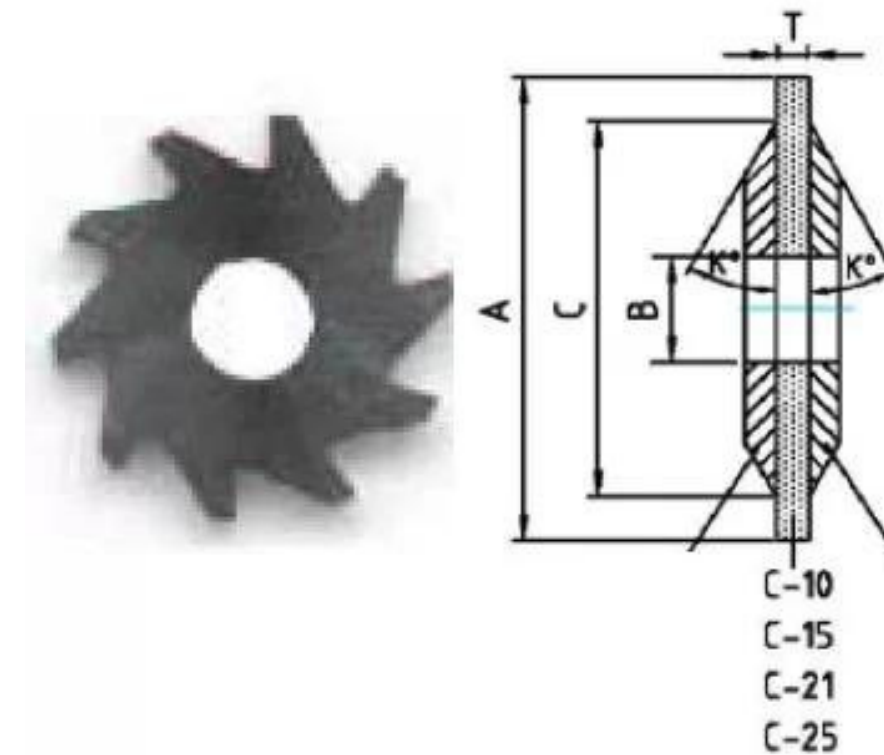
## CUTTER MODEL C-10

The tungsten carbide cutters model C-10 present the following technical features:

Ø A 10 mm;  
Ø B 3 mm;

Thickness: from 0.4 up to 1.0 mm

No. Teeth: 10



## CUTTER MODEL C-15

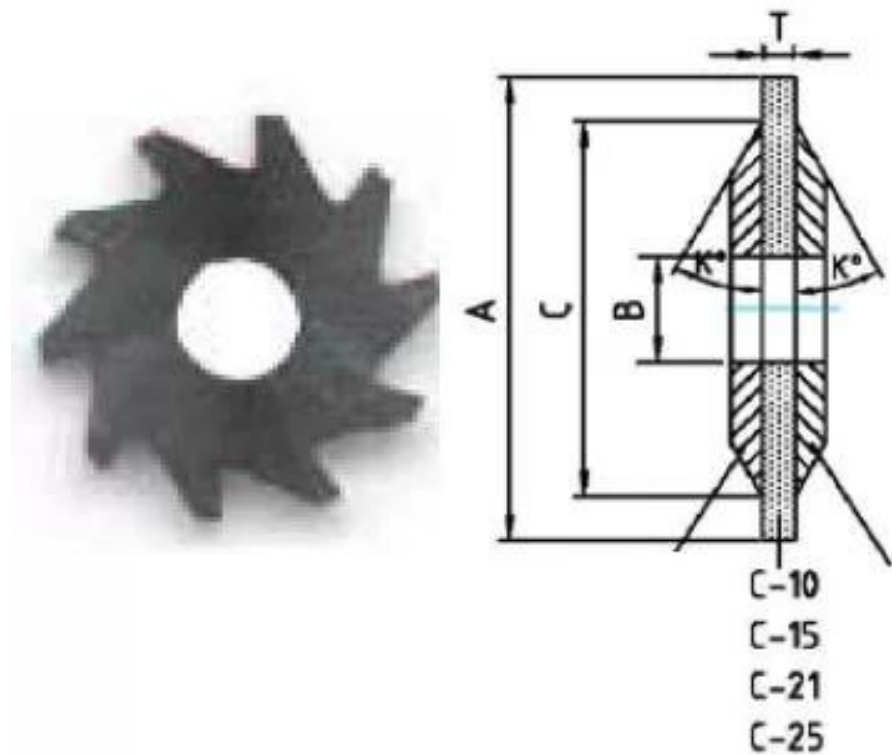
The tungsten carbide cutters model C-15 present the following technical features:

Ø A 15 mm;  
Ø B 5 mm;

Thickness: from 0.4 up to 1.5 mm

No. Teeth: 10

# CUTTERS – C MODEL



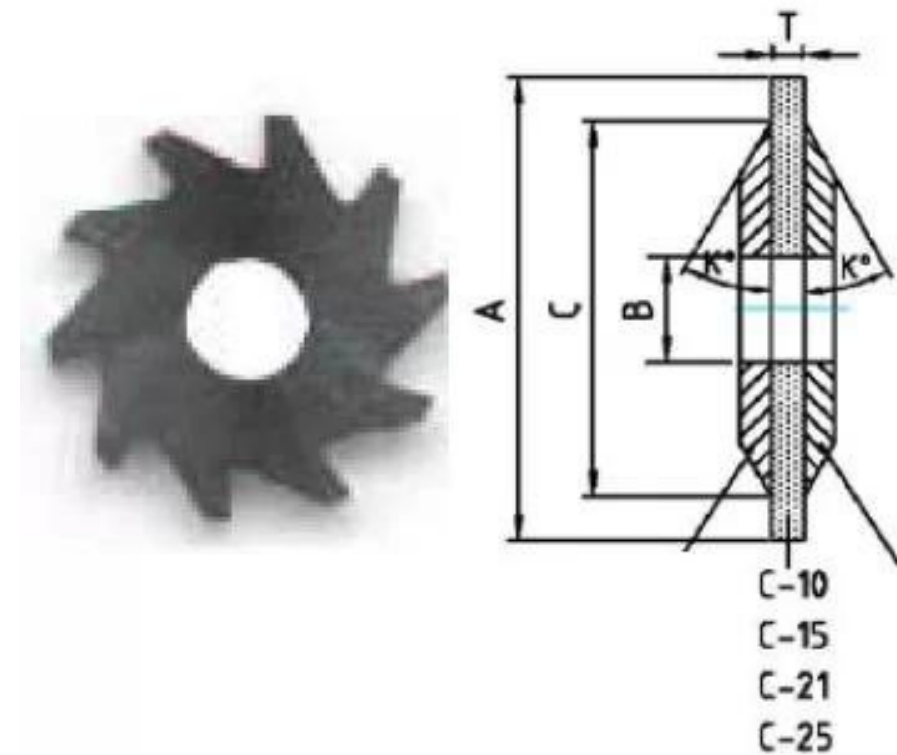
## CUTTER MODEL C-21

The tungsten carbide cutters model C-21 present the following technical features:

Ø A 21 mm;  
Ø B 7 mm;

Thickness: from 0.4 up to 1.8 mm

No. Teeth: 12



## CUTTER MODEL C-25

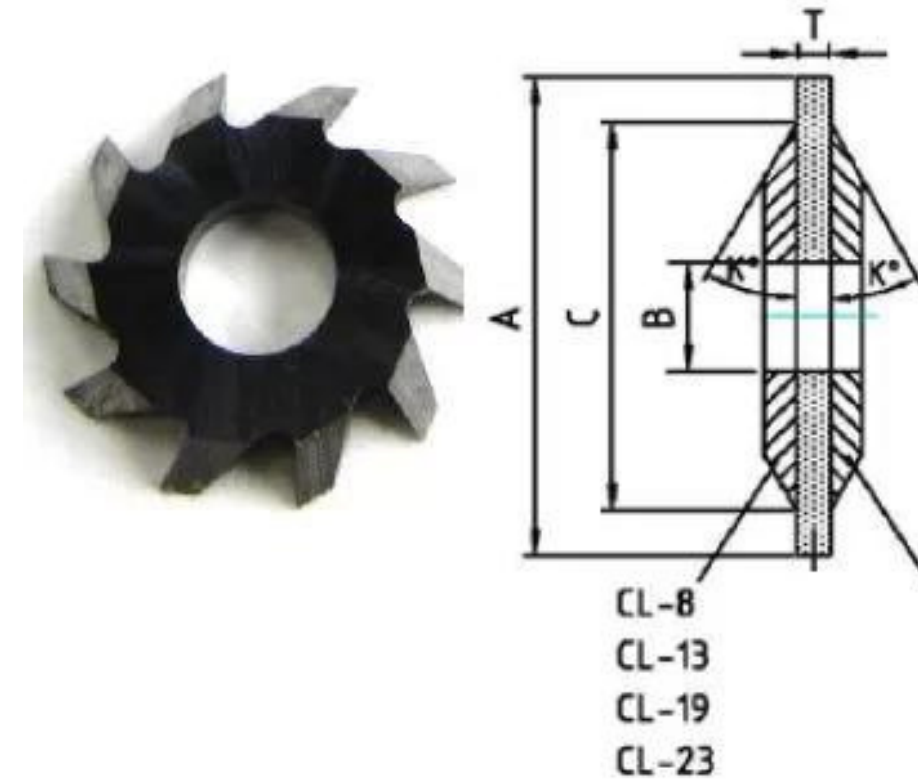
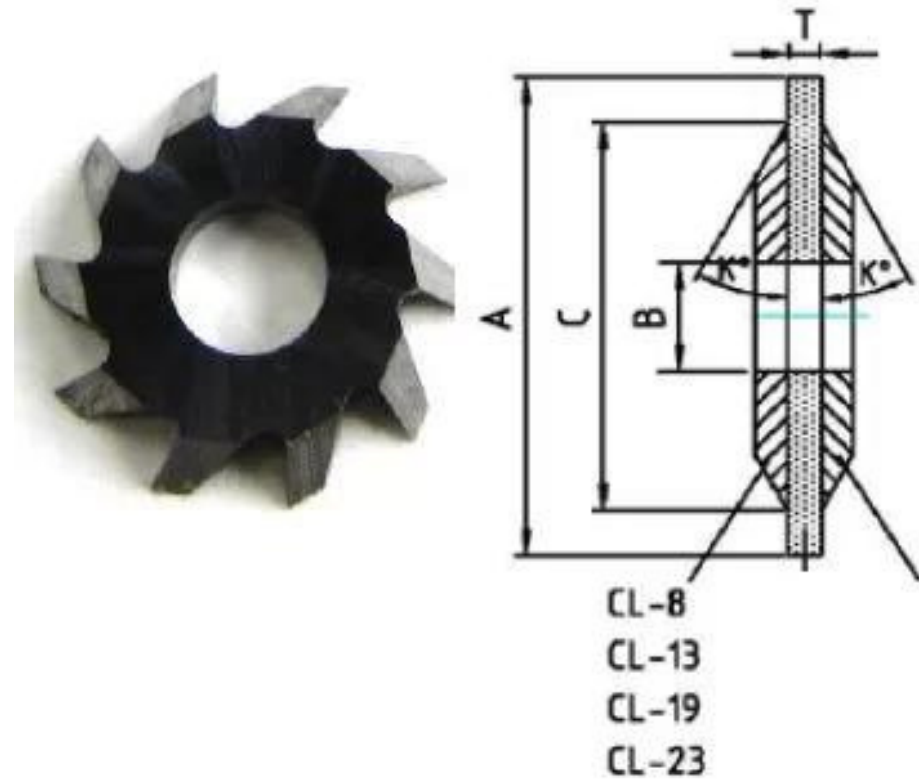
The tungsten carbide cutters model C-25 present the following technical features:

Ø A 25 mm;  
Ø B 7 mm;

Thickness: from 0.4 up to 1.8 mm

No. Teeth: 20

# CUTTERS – CL MODEL



## CUTTER MODEL CL-8.5

The tungsten carbide cutters model CL-8,5 present the following technical features:

Ø B 3 mm;  
Ø C 8.5 mm;

Thickness: 0.8 mm

Angle: 45°  
No. Teeth: 10

## CUTTER MODEL CL-13.5

The tungsten carbide cutters model CL-13,5 present the following technical features:

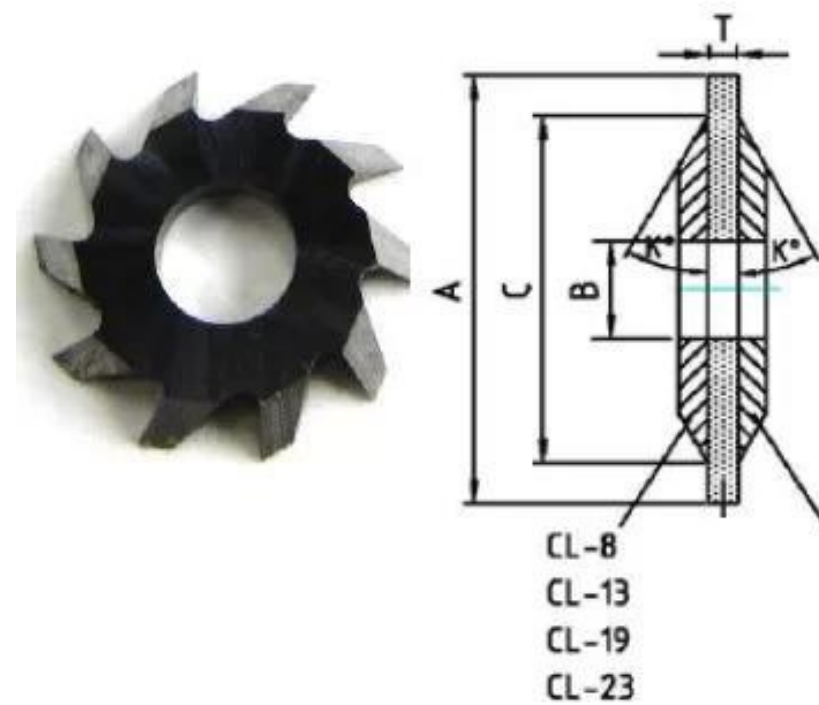
Ø B 5 mm;  
Ø C 13.5 mm;

Thickness: 0.8 mm

Angle: 45°  
No. Teeth: 10



# CUTTERS – CL MODEL



## CUTTER MODEL CL-19

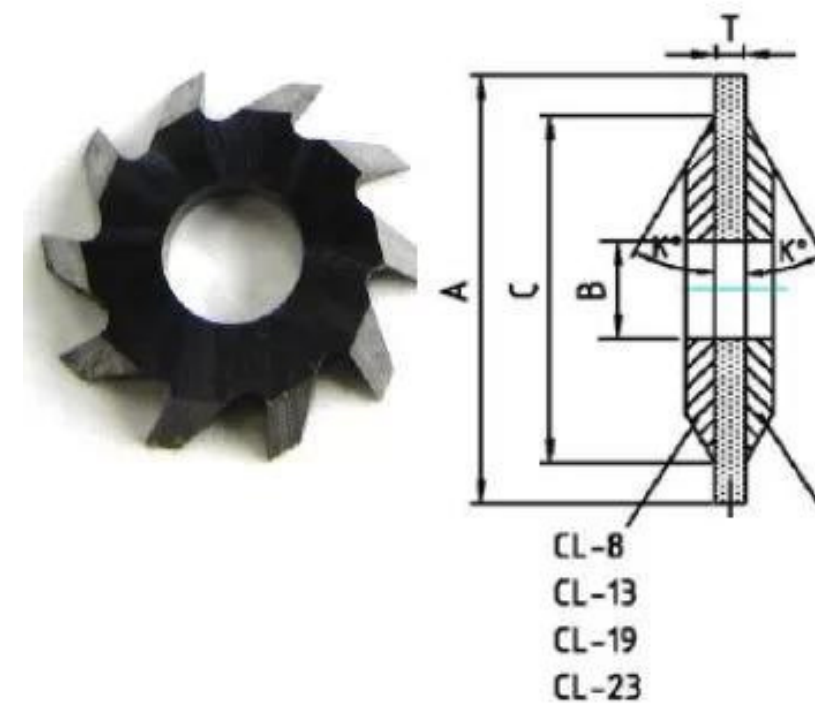
The tungsten carbide cutters model CL-19 present the following technical features:

$\varnothing$  B 3 mm;  
 $\varnothing$  C 18/19 mm;

Thickness: 1.0 mm

Angle: 30° / 45°

No. Teeth: 12



## CUTTER MODEL CL-23

The tungsten carbide cutters model CL-23 present the following technical features:

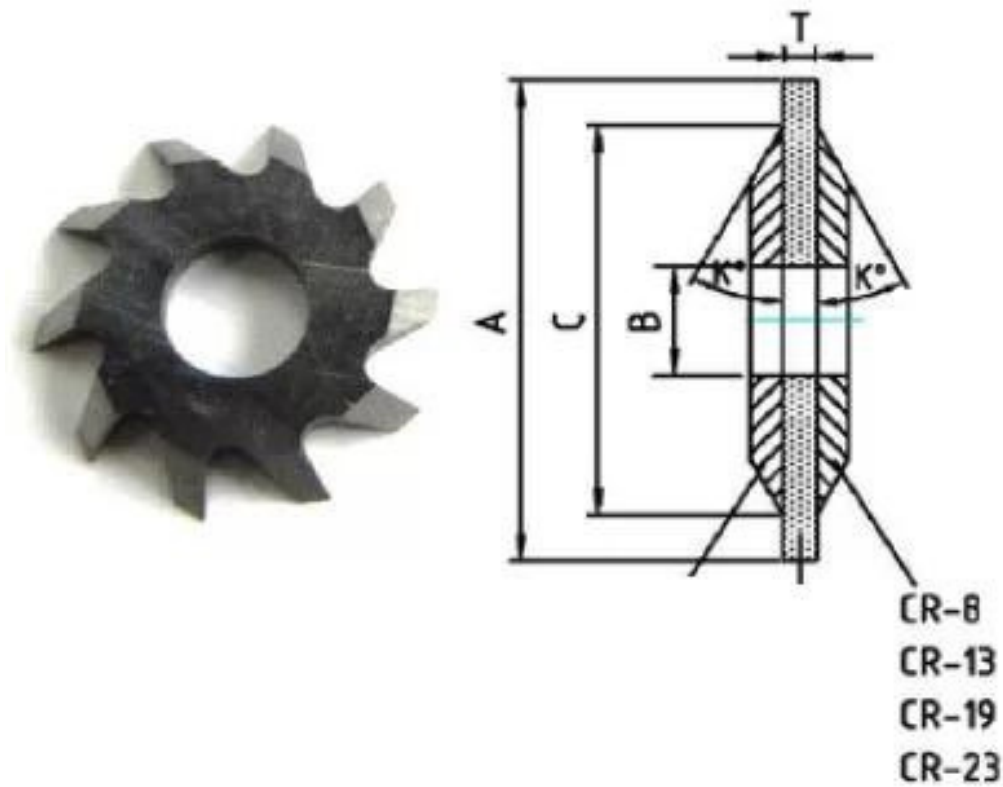
$\varnothing$  B 7 mm;  
 $\varnothing$  C 23 mm;

Thickness: 1.0 mm

Angle: 30° / 45°

No. Teeth: 20

# CUTTERS – CR MODEL



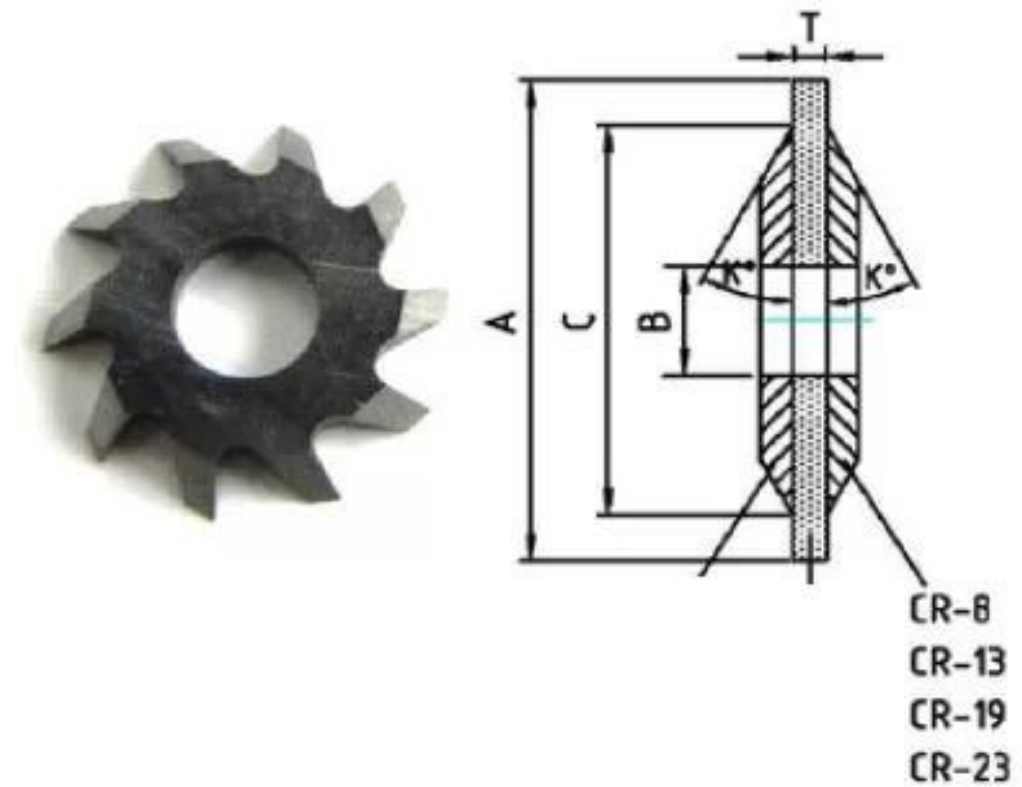
## CUTTER MODEL CR-8.5

The tungsten carbide cutters model CR-8,5 present the following technical features:

Ø B 3 mm;  
Ø C 8.5 mm;

Thickness: 0.8 mm

Angle: 45°  
No. Teeth: 10



## CUTTER MODEL CR-13.5

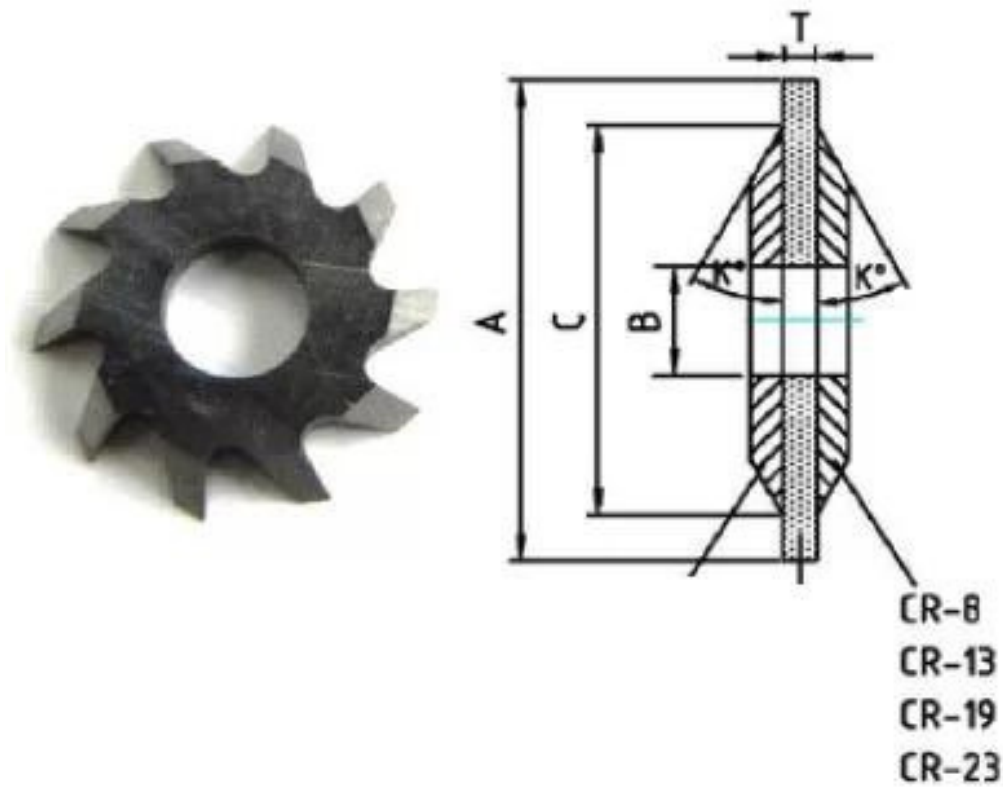
The tungsten carbide cutters model CR-13,5 present the following technical features:

Ø B 5 mm;  
Ø C 13.5 mm;

Thickness: 0.8 mm

Angle: 45°  
No. Teeth: 10

# FRESE – MODELLO CR



## CUTTER MODEL CR-19

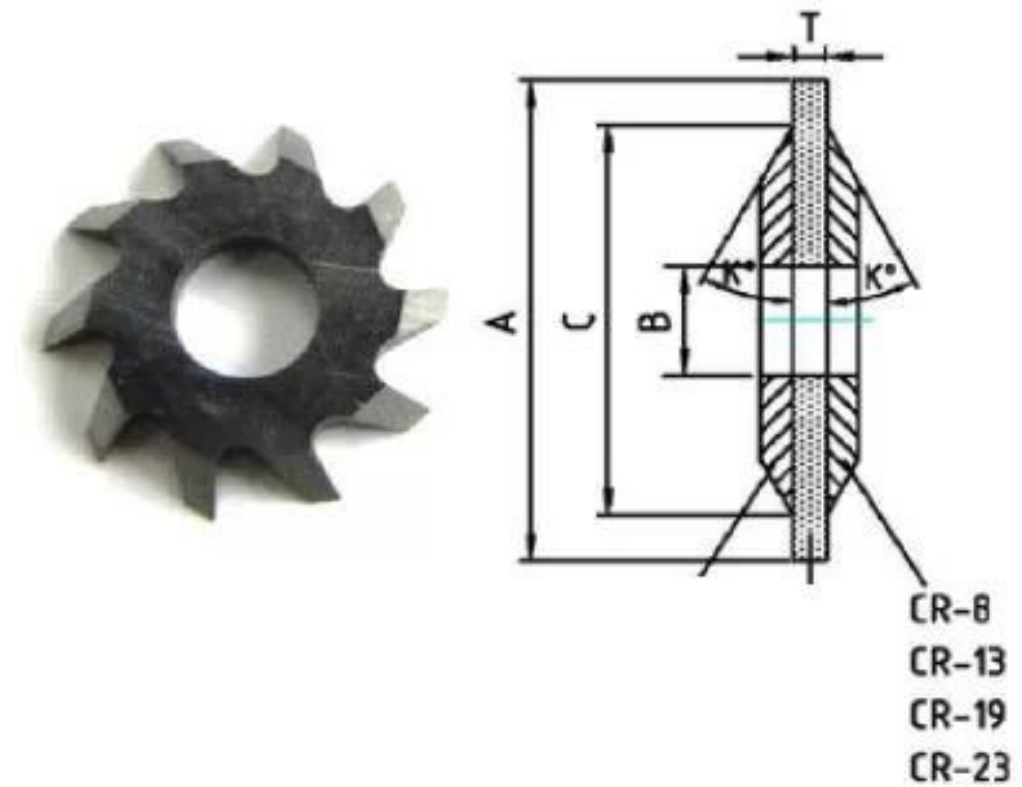
The tungsten carbide cutters model CR-19 present the following technical features:

$\varnothing$  B 3 mm;  
 $\varnothing$  C 18/19 mm;

Thickness: 1.0 mm

Angle:  $30^\circ / 45^\circ$

No. Teeth: 12



## CUTTER MODEL CR-23

The tungsten carbide cutters model CR-23 present the following technical features:

$\varnothing$  B 7 mm;  
 $\varnothing$  C 23 mm;

Thickness: 1.0 mm

Angle:  $30^\circ / 45^\circ$

No. Teeth: 20

# Contact information

**RIMAC s.r.l.**

Via Doberdò, 39  
21046 Malnate (VA) - Italy

+39 0332 429963

**info@rimacmachines.com**

**www.rimacmachines.com**

RIMAC is your source for proven electric motor manufacturing expertise, helping you improve production rate and product quality.

